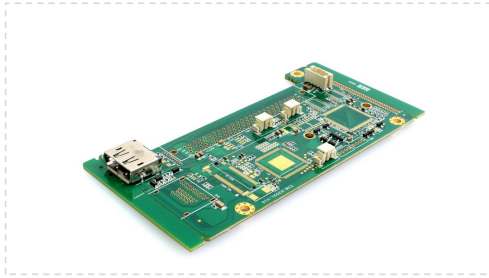


EXB-D2531-V10

EXB Module with Longxun solution DP to 2DP

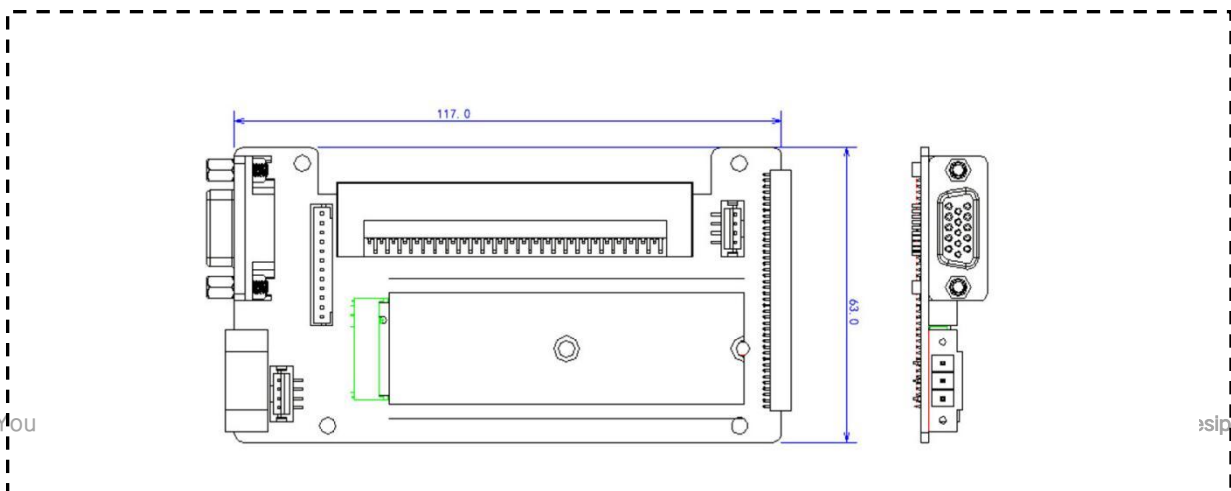


- ◆ LEGO Mode Technology
- ◆ With 1 HDMI
- ◆ HDMI Version: HDMI 1.4

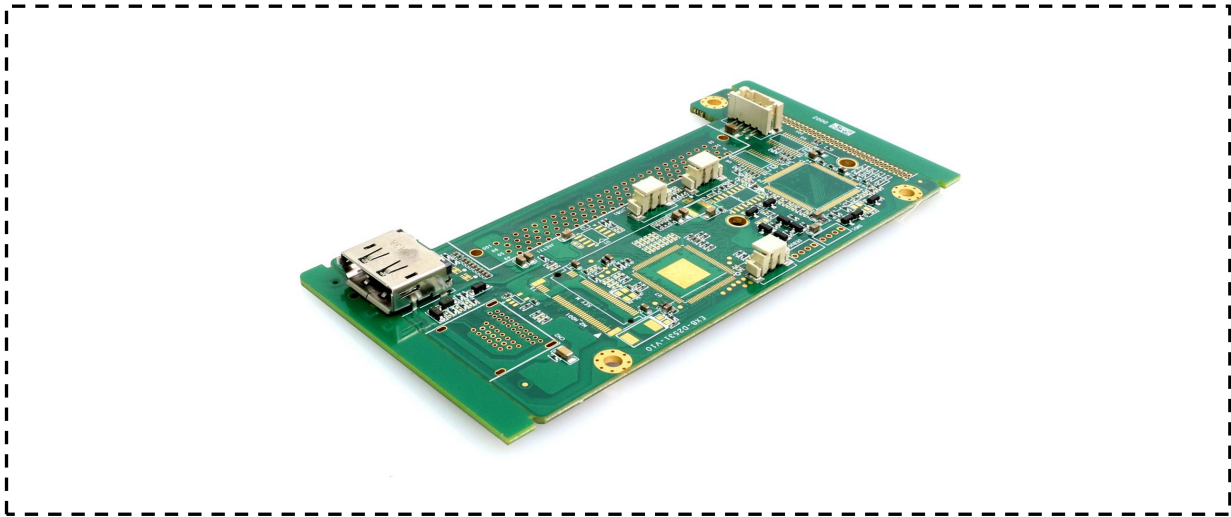
► Specifications

Parameter	Description
Input Interface	HDMI
EDID Mode	Fixed
Supported Resolutions	640x480 ~ 1920x1080@60Hz / 3840x2160@30Hz
HPD (Hot Plug Detect)	Supported
Power Supply	5V DC from Motherboard Pin
Power Consumption	< 1W (typical)
Operating Temperature	-10°C to +60°C
Storage Temperature	-20°C to +70°C
Dimensions	117 x 63mm
Mounting Method	Screw Holes
Compatible Motherboards	CES-1201, CES-1902

► Dimensions



► Image



► Ordering Information

Model	Part Number
EXB-D2531-V10	C4.01.09.243

► Compatible List

Model No.	EXB-D2531-V10
CTN-102B	V