

EXB-D2242-V10

EXB Module with Dual Power Input

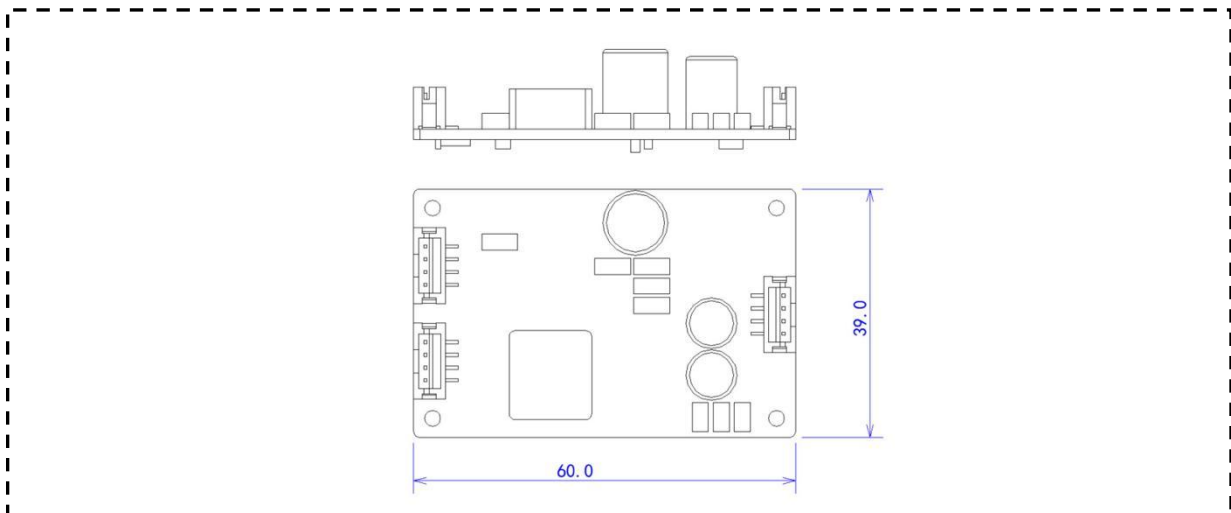


- ◆ LEGO Mode Technology
- ◆ Redundant Power
- ◆ Wide voltage input

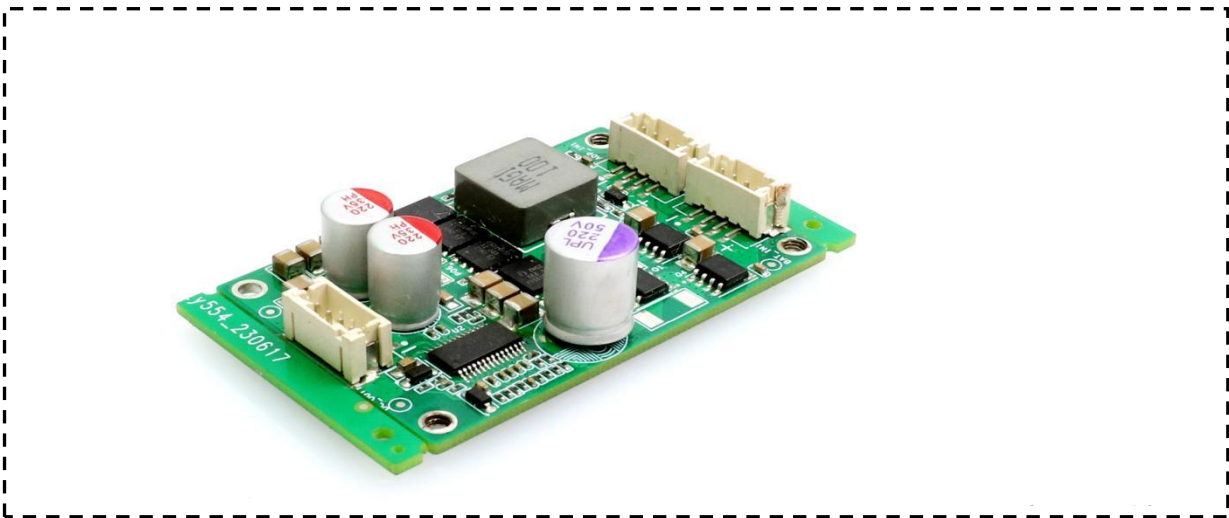
► Specifications

| Parameter | Description |
|------------------------|------------------------------|
| Profile | L300 |
| Compatible Motherboard | CES-1901, CES-1601, CES-1201 |
| Power Supply | 5V DC from Motherboard Pin |
| Power Consumption | < 1W (typical) |
| Operating Temperature | -10°C to +60°C |
| Storage Temperature | -20°C to +70°C |
| Dimensions | 60 x 39.0mm |
| Mounting Method | Screw Holes |

► Dimensions



► Image



► Ordering Information

| Model | Part Number |
|---------------|--------------|
| EXB-D2242-V10 | C4.01.09.144 |

► Compatible List

| Model No. | EXB-D2242-V10 |
|------------|---------------|
| UPC-309R | V |
| UTC-W2182E | V |
| UTC-W1792E | V |
| UTC-W2192E | V |
| | |
| | |
| | |
| | |
| | |
| | |
| | |