

EXB-D2138

EXB Module with VGA

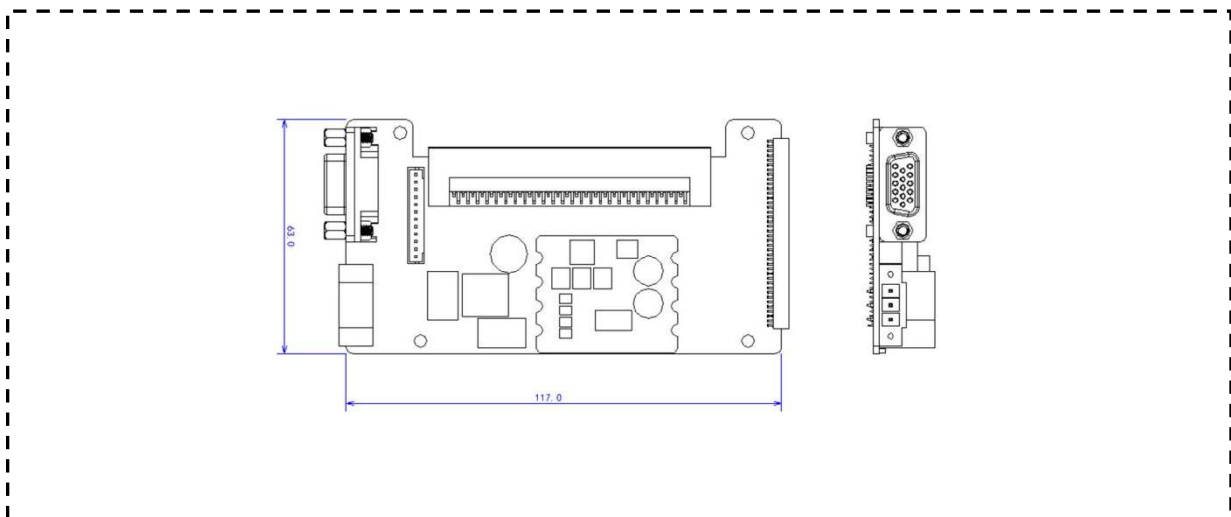


- ◆ LEGO Mode Technology
- ◆ VGA
- ◆ Extended COM

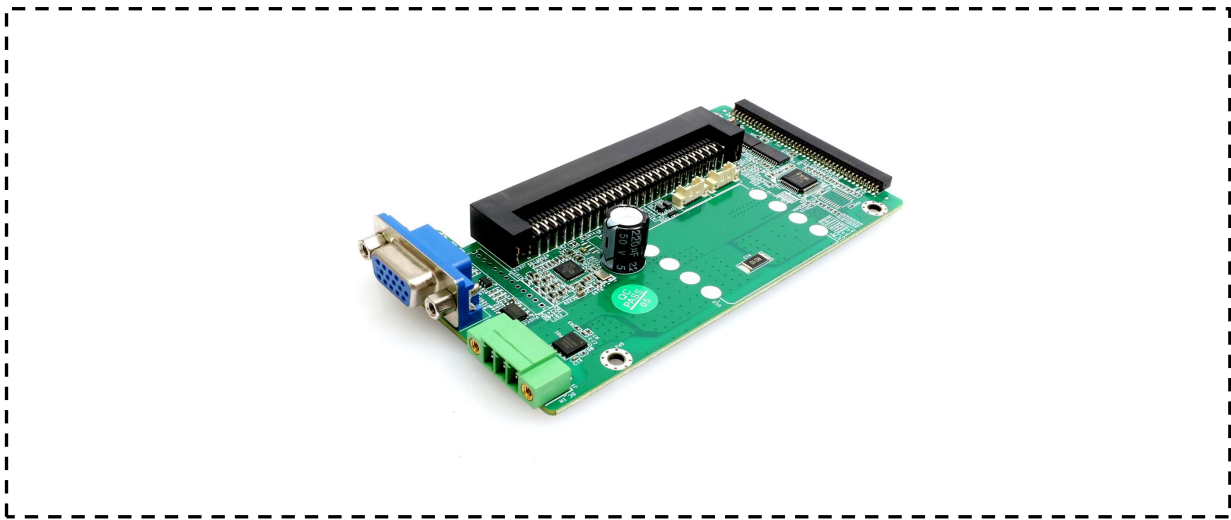
► Specifications

Parameter	Description
Ports	VGA
Applicable Structure	L200
Compatible Motherboards	CES-1602, CES-1901
Compatible COB	COB-21C6
Reserved function	COM Ports: 3 × COM - 2 × RS-232 - 1 × RS-485
Power Supply	5V DC from Motherboard Pin
Power Consumption	< 1W (typical)
Operating Temperature	-10°C to +60°C
Storage Temperature	-20°C to +70°C
Dimensions	117 × 62 mm
Mounting Method	Screw Holes

► Dimensions



► Image



► Ordering Information

Model	Part Number
EXB-D2138	C4.01.09.250

► Compatible List

Model No.	EXB-D2138
EPC-10XA	V
UPC-20XA	V
EPC-20XA	V
EPC-S10X2A	V
EPC-S12X2A	V
UTC-S10X2A	V
UTC-S12X2A	V

